



Subscribe

Home » Eclectic Decor Style

Eclectic Decor Style

Your decor style is **eclectic**. Thank you for taking the **Find your decor style quiz!** If you want to take the quiz again you can do so [here](#).

If you've landed on this page without taking a quiz, find your decor style [here](#).

Your results!

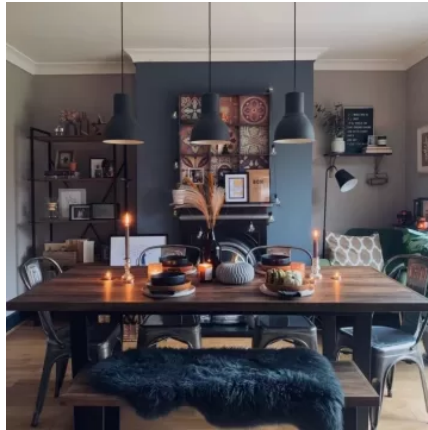
After analyzing your answers, we have determined that your preferred decor style is **eclectic**.



Eclectic decor style is all about mixing and matching different design elements to create a unique and personalized space that reflects your personality and interests. This style is characterized by its bold use of colour, patterns, and textures, and its willingness to blend different design styles to create a cohesive look.

With [eclectic decor](#), you have the freedom to experiment with different design elements, and the opportunity to showcase your favorite pieces in a way that feels cohesive and intentional. Whether you're drawn to vintage furniture, bright colours, or bold patterns, eclectic decor style is all about embracing what you love and making it work together.

One of the keys to eclectic decor style is balance. To create a space that feels harmonious, you'll want to balance out bold colours and patterns with neutral elements and cohesive design elements. You can do this by using a neutral color palette as a base, and then layering in pops of color and pattern through accessories like pillows, rugs, and artwork.



Another important aspect of eclectic decor style is mixing different design elements. You can blend vintage and modern pieces, or incorporate elements from different design styles like industrial, bohemian, or mid-century modern. The key is to find a common thread that ties everything together, whether it's a color scheme, a texture, or a design element.

What is eclectic decor style?

Eclectic decor style is all about mixing and matching different design elements to create a unique and personalized space that reflects your personality and interests. This style is characterized by its bold use of colour, patterns, and textures, and its willingness to blend different design styles to create a cohesive look.

How can I make sure my eclectic decor style looks cohesive?

The key to creating a cohesive eclectic decor style is to find a common thread that ties everything together. This could be a colour scheme, a texture, or a design element. By using this common thread throughout your space, you can create a harmonious look that feels intentional and thoughtfully designed.

What types of furniture work well with eclectic decor style?

Consider blending vintage and modern pieces, or mixing furniture styles from different eras to create a unique and personalized look. Just be sure to balance out bold pieces with neutral elements to create a cohesive look.

Can I incorporate bold colors and patterns in my eclectic decor style?

Absolutely! Bold colours and patterns are a hallmark of eclectic decor style. You can incorporate these elements through accessories like pillows, rugs, and artwork, or by using bold wallpaper or paint on an accent wall. Just be sure to balance out bold elements with neutral pieces to create a cohesive look.

Is it okay to mix and match different design styles with eclectic decor style?

Yes, that's the beauty of eclectic decor style! You can mix and match different design styles to create a unique and personalized look. The key is to find a common thread that ties everything together, whether it's a colour scheme, a texture, or a design element. By doing so, you can create a space that feels intentional and cohesive.



5 ways to add eclectic decor style to your home:

1. Mix and match design elements: The key to eclectic decor style is mixing and matching different design elements to create a unique and personalized space. Consider blending vintage and modern pieces, or incorporating elements from different design styles like industrial, bohemian, or mid-century modern.
2. Find a common thread: To create a cohesive look, you'll want to find a common thread that ties everything together. This could be a color scheme, a texture, or a design element. By using this common thread throughout your space, you can create a harmonious look that feels intentional and thoughtfully designed.
3. Embrace bold colors and patterns: Bold colors and patterns are a hallmark of eclectic decor style. Don't be afraid to use these elements in your space through accessories like pillows, rugs, and artwork, or by using bold wallpaper or paint on an accent wall.
4. Balance out bold pieces with neutral elements: To create a cohesive look, it's important to balance out bold pieces with neutral elements. You can do this by using a neutral color palette as a base, and then layering in pops of color and pattern through accessories like pillows, rugs, and artwork.
5. Showcase your personality: The beauty of eclectic decor style is that it allows you to showcase your personality and interests through your space. Incorporate items that have personal meaning to you, whether it's artwork, family heirlooms, or travel souvenirs. These items will add character and personality to your space, and make it truly feel like home.

So embrace your eclectic decor style and start creating a home that reflects your personality and values. Browse below for eclectic home style ideas.



